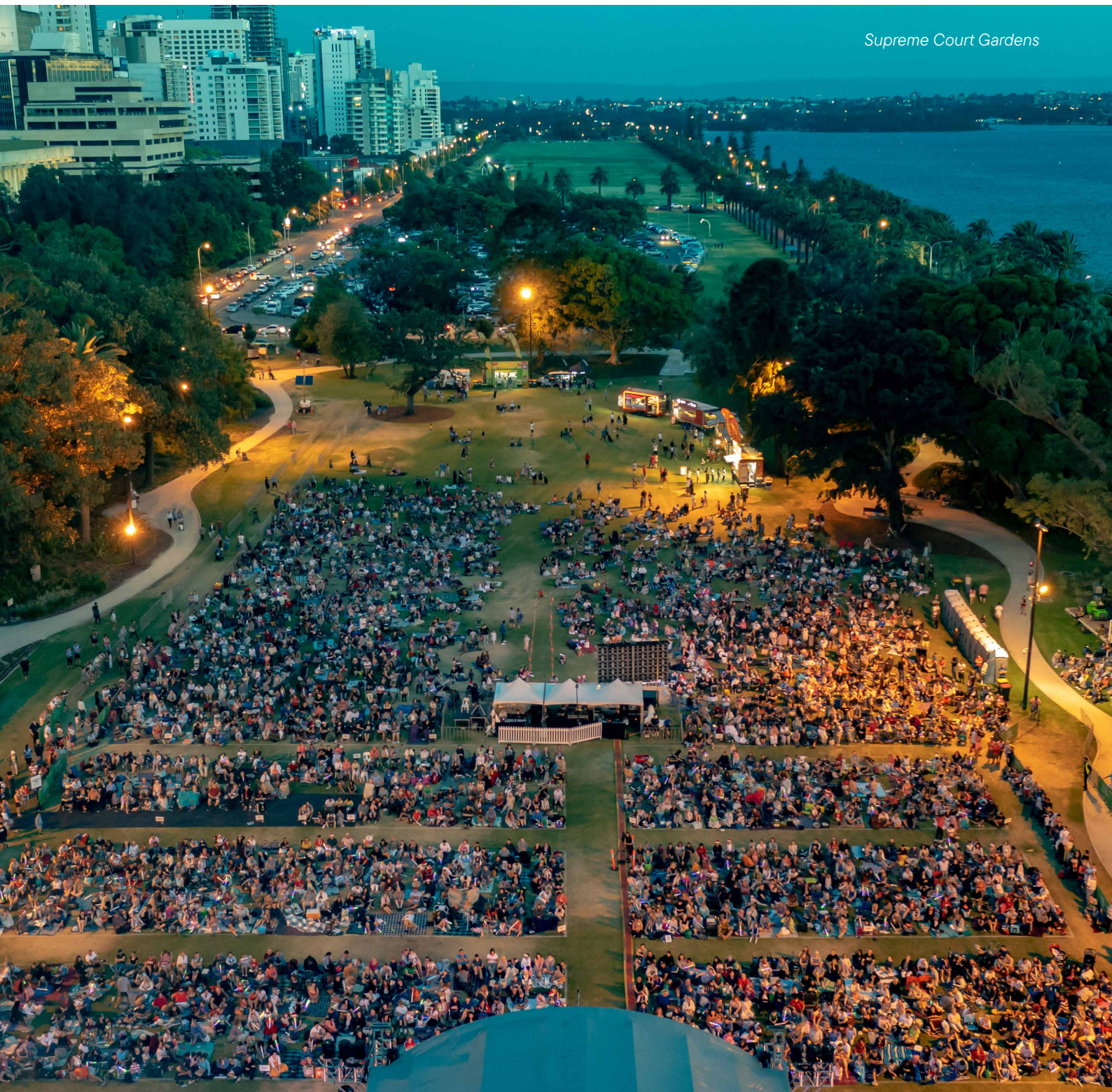


Event Venues Prospectus

Supreme Court Gardens



Perth: our capital
city and events
heart of WA.



ACKNOWLEDGEMENT

The City of Perth acknowledges the Whadjuk Nyoongar people as the Traditional Owners of the lands and waters where Perth city is situated today and pay our respect to Elders past and present.

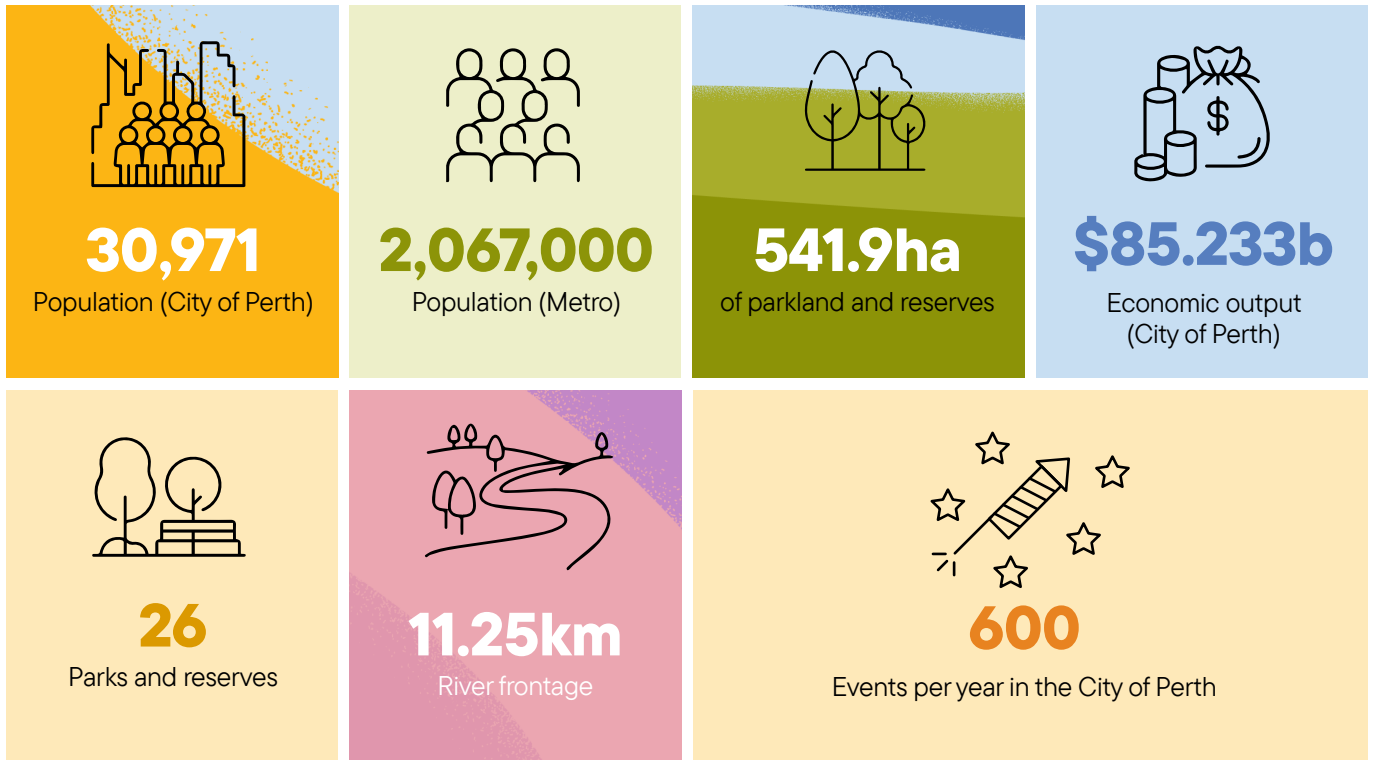
City of Perth

City of Light

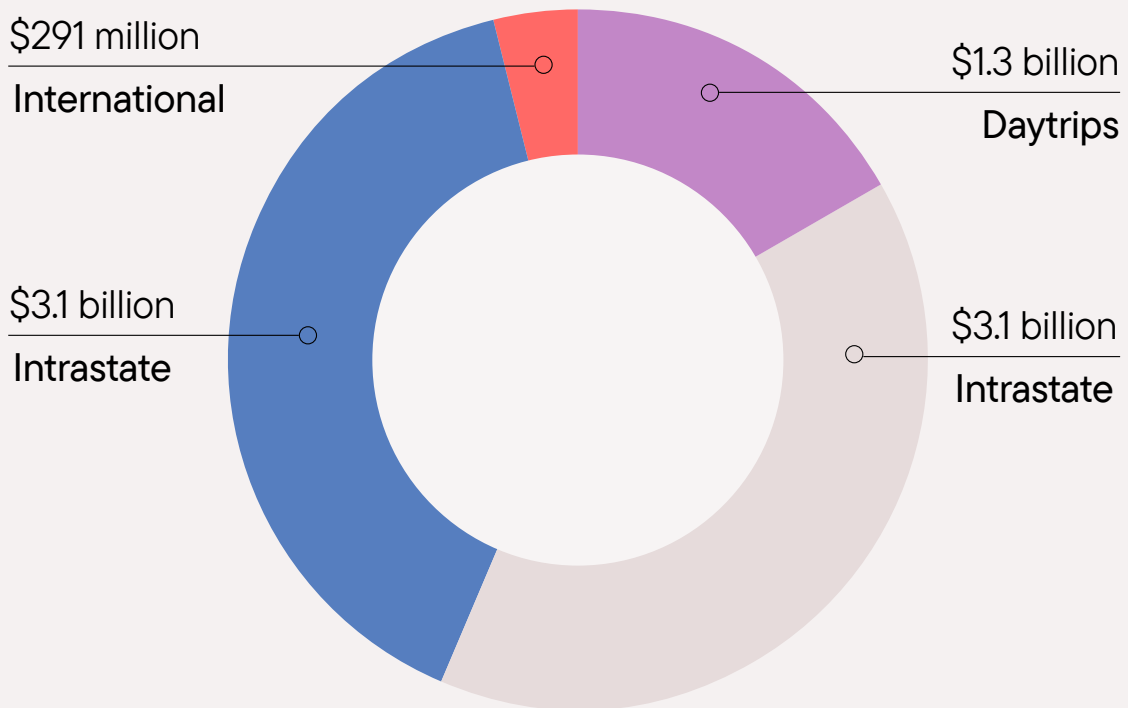
A liveable, sustainable and prosperous City.

 <p>LIVEABLE</p>	<h3>Event friendly</h3>  <p>We are open for business. We provide a simple, competitively priced event bookings process together with a can-do attitude and supportive services.</p>
	<h3>Uniquely Perth</h3>  <p>Perth is unique - our priority is to support events that build and communicate our unique cultural identity.</p>
	<h3>Community Benefit</h3>  <p>We love events because they create multiple positive benefits. We will leverage events to make Perth safer, cleaner, friendlier and more people focused.</p>
	<h3>Something for Everyone</h3>  <p>Using a portfolio approach, we will facilitate, support and organise a diverse range of events that are inclusive, appeal to a broad range of demographics and provide enriching experiences for all throughout the year.</p>
 <p>SUSTAINABLE</p>	<h3>Sustainability</h3>  <p>We will advocate for sustainable event design that minimises waste, single-use plastics, local impact and carbon footprint.</p>
 <p>PROSPEROUS</p>	<h3>Support Local</h3>  <p>Our focus is local. We will advocate for the use of local businesses and suppliers, and we will design our own events with local businesses in mind.</p>

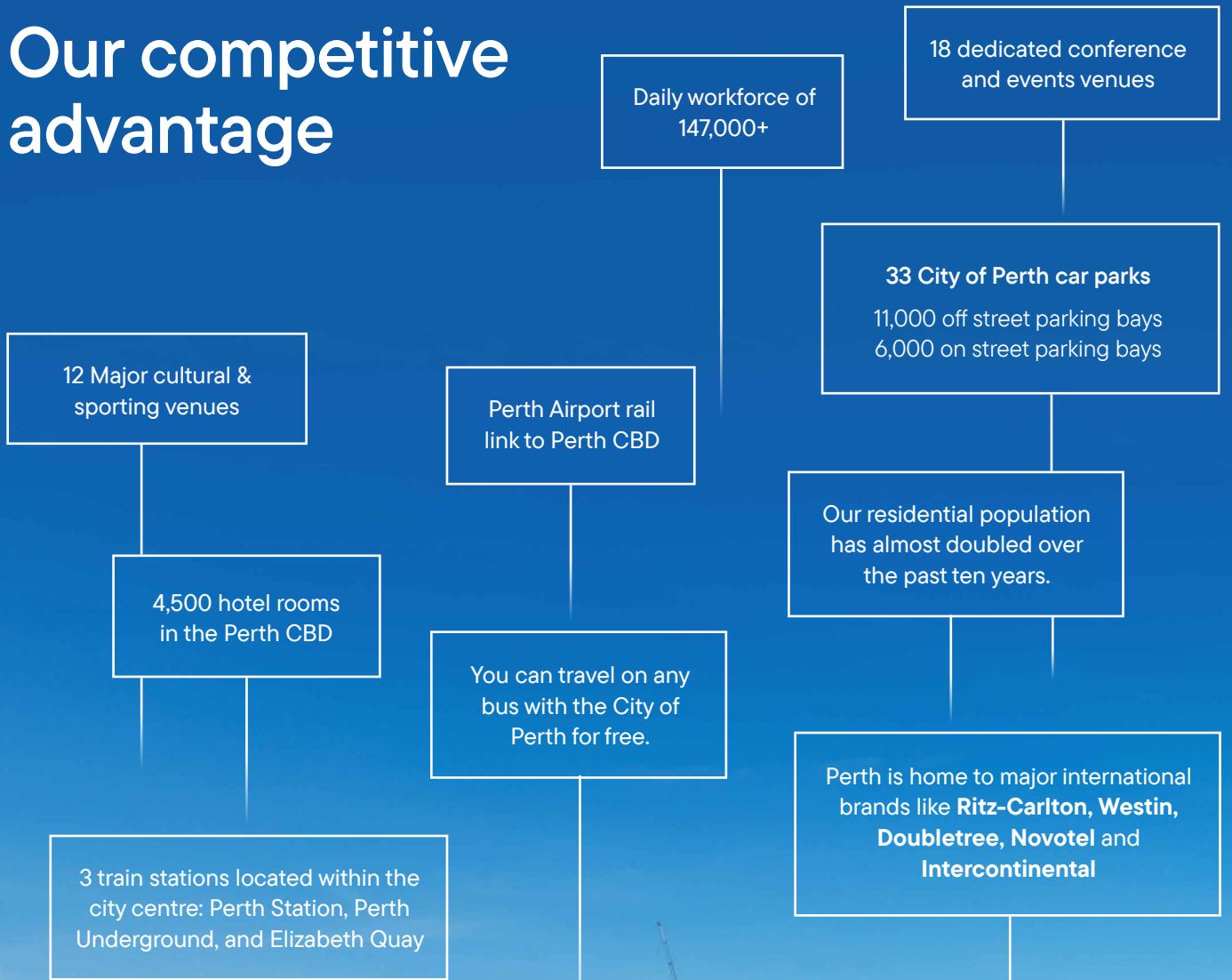
City Borders



Leisure visitor spend in WA (2020)



Our competitive advantage



City of Perth



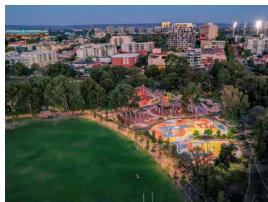
VENUES



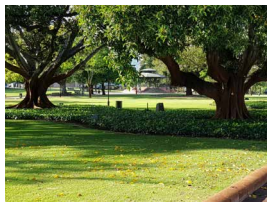
1 Langley Park



2 Supreme Court Garden



3 Wellington Square



4 Russell Square



5 Forrest Place



6 City of Perth Library



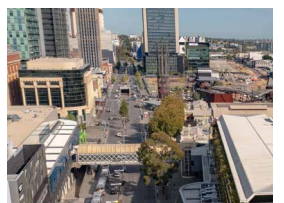
7 Perth Town Hall



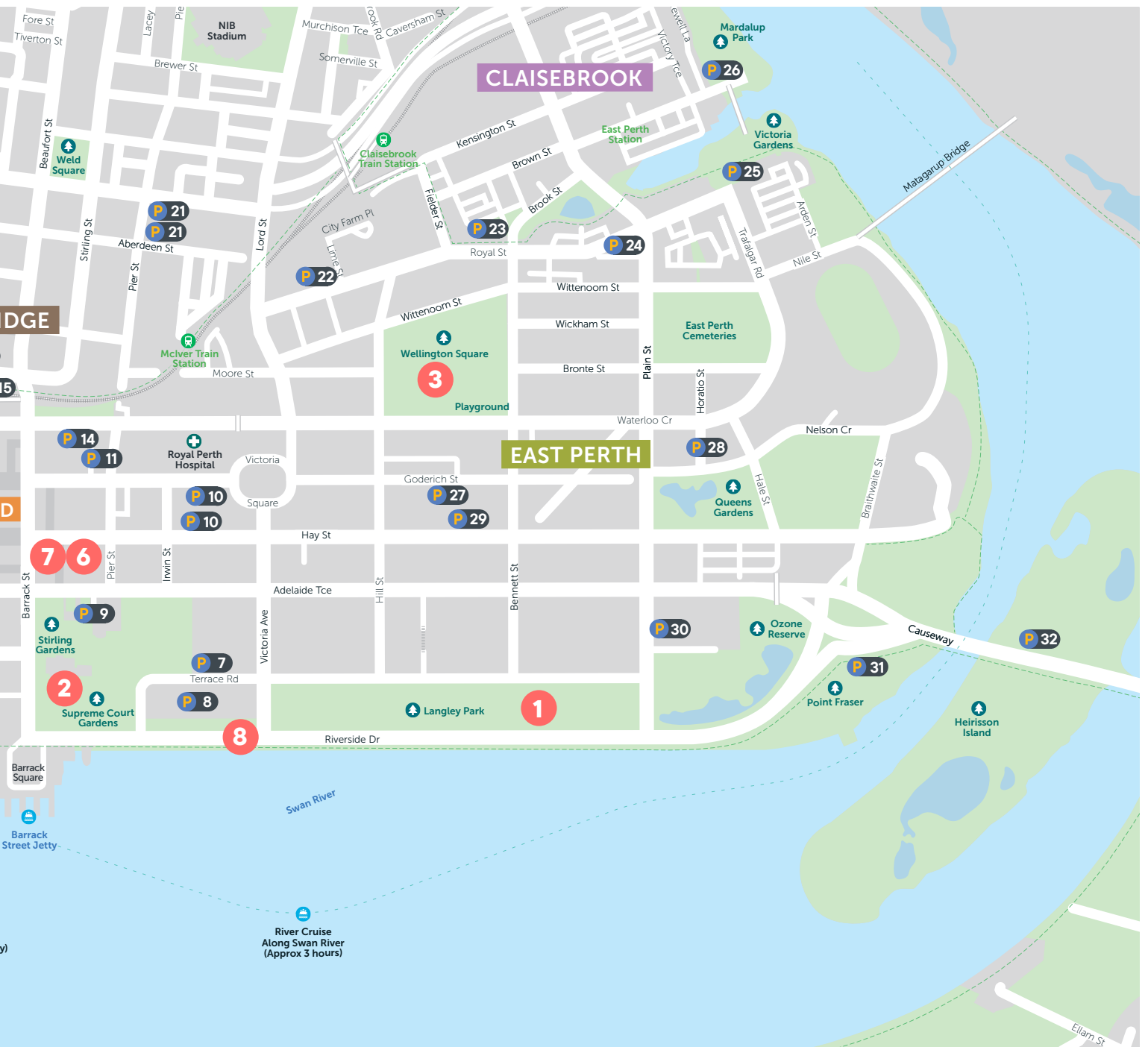
8 Riverside Drive



9 St Georges Terrace



10 Wellington Street



PARKING

WEST PERTH

- 1 Mayfair St
- 2 Wellington St
- 3 Coolgardie St

PERTH CITY

- 4 Mounts Bay Rd
- 5 John Oldham Park
- 6 Convention Centre
- 7 Concert Hall
- 8 Terrace Rd
- 9 Council House
- 10 Fire Station
- 11 Pier St
- 12 Elder St
- 13 His Majesty's
- 14 The Garage

NORTHBRIDGE

- 15 Citiplace
- 16 Cultural Centre
- 17 Roe St
- 18 James St
- 19 Aberdeen St
- 20 State Library
- 21 Newcastle St

CLAISEBROOK

- 22 Royal St
- 23 Saunders St
- 24 Regal Place
- 25 Victoria Gardens
- 26 Mardalup Park

EAST PERTH

- 27 Goderich St
- 28 Queens Gardens
- 29 Hay St East
- 30 Plain St
- 31 Point Fraser
- 32 Heirisson Island



Venues

OUTDOOR VENUES

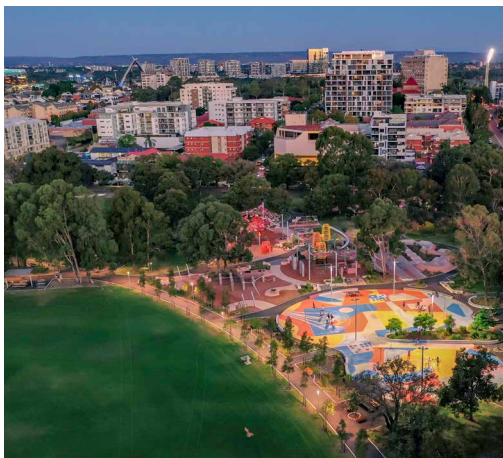


Langley Park

Size and Capacity 900m x 100m (90,000sqm) • 80,000+

Event Examples Concerts, music festivals, circus tents, air shows.

Unique Selling Point Largest City of Perth grassed venue. Flat rectangular open space, adjacent to the river, city views.

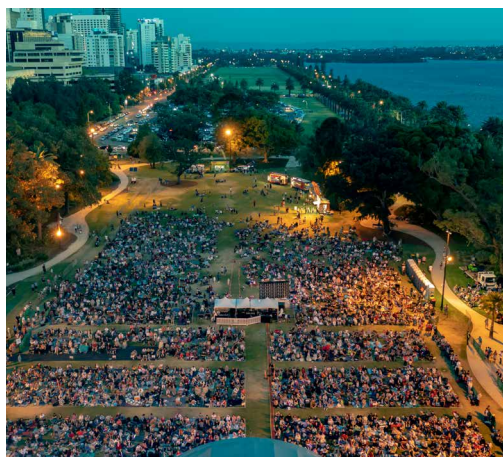


Wellington Square

Size and Capacity 40,000 sqm • 25,000

Event examples Concerts, festivals.

Unique Selling Point Recently redeveloped with two grassed areas divided. Adjacent to a 3000sqm award winning intergenerational playground.

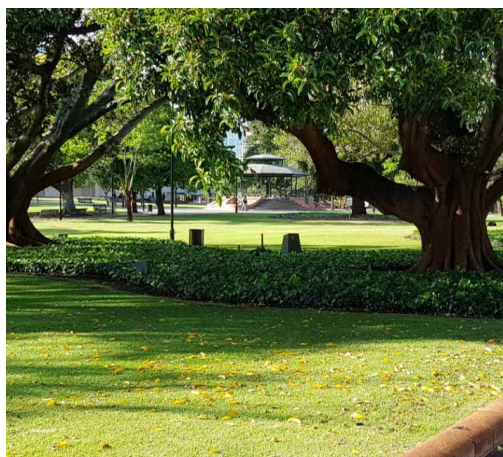


Supreme Court Gardens

Size and Capacity 15,000 sqm • 12,000

Event Examples Concerts, festivals, exhibitions.

Unique Selling Point CBD location, close to public transport, grassed area is semi-enclosed by mature trees, pathways and garden beds.



Russell Square

Size and Capacity 20,000 sqm • 12,000

Event Examples Annual Fringe World Festival.

Unique Selling Point Located in the heart of Perth's entertainment precinct



Elizabeth Quay

Size and Capacity 7,000

Event Examples Markets, carnivals, boat shows, water sport, drone shows.

Unique Selling Point Waterfront landmark located on the edge of the picturesque Swan River, in the heart of Perth CBD. Close to public transport.



Forreast Place

Size and Capacity 3,000 sqm • 2,000

Event Examples Arts and culture events, markets, and sporting celebrations.

Unique Selling Point Located in the middle of the CBD. Surrounded by unique retail, food and beverage offerings. Large footfall. Close to all public transport hubs.

INDOOR VENUES



City of Perth Library

Terrace

Size and Capacity
110 Cocktail Style.

Unique Selling Point
Spectacular Swan River and city views.

Auditorium

Size and Capacity
90 Theatre style.

Unique Selling Point
Located in the vibrant Cathedral Square precinct in the heart of the city. The library boasts beautiful views of the Swan River.



Perth Town Hall

Size and Capacity Main Hall: 21m x 12.8m • Up to 340 Theatre style.

Event Examples Banquets, theatre-style and cocktail events, festivals, weddings or exhibitions

Unique Selling Point Historic venue, lends itself to a variety of themed events.

ROADS



Riverside Drive

Size and Capacity

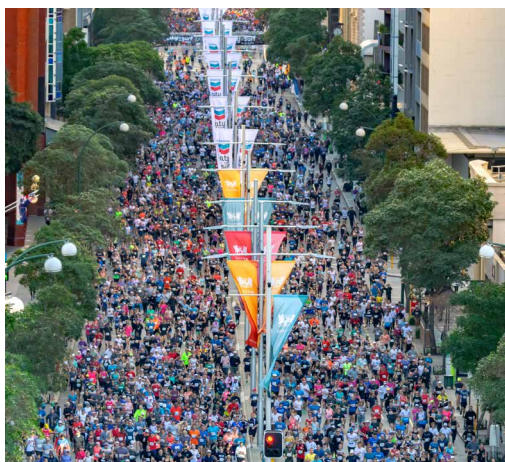
1,400m straight dual carriageway adjacent to the Swan River on one side and Langley Park and Supreme Court Gardens on the other.

Event Examples

Car rallies, fun runs.

Unique Selling Point

Has adjacent grassed reserves for extended set ups. Iconic riverfront views of Perth CBD.



St Georges Terrace

Size and Capacity

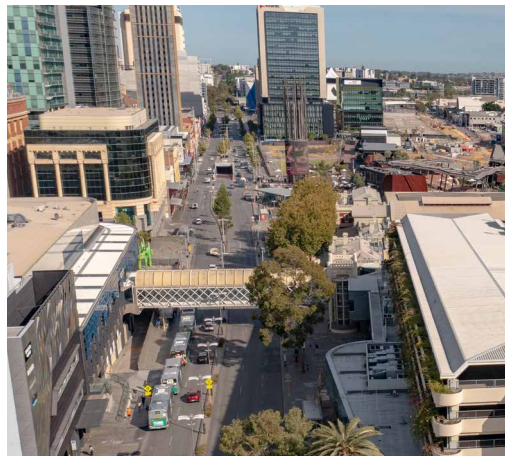
Perth's main CBD street. 1,600m straight triple carriageway through the center of the CBD.

Event Examples

Street parades, starting location for major fun runs.

Unique Selling Point

Close to public transport.



Wellington Street

Size and Capacity

Approximately 700m can be closed.

Event Examples

Street parade, car events, festivals.

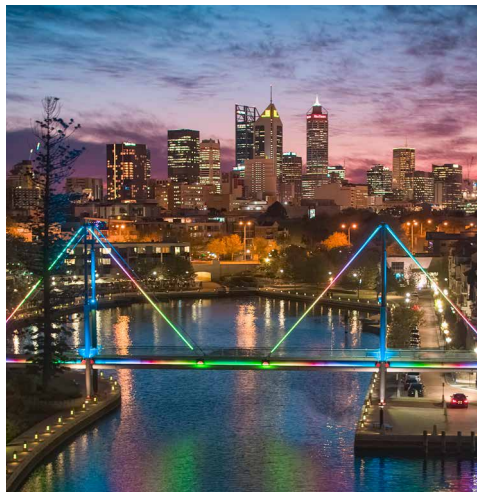
Unique Selling Point

Close to public transport, wide stretch of road.

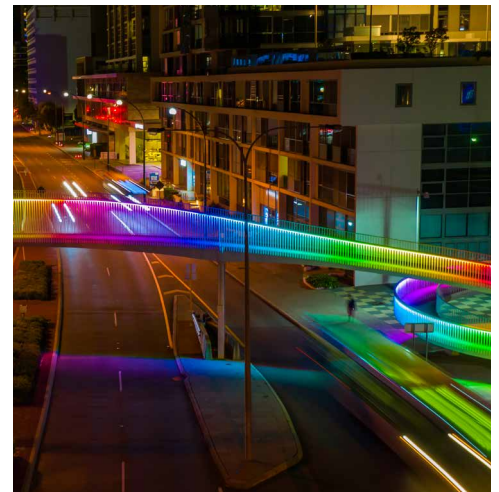
Lighting sites



Council House



Trafalgar Bridge



Adelaide Tce

The City of Light can illuminate for your occasion or cause through creative programming the following assets. Major assets are highlighted below. Minor lighting assets (listed underneath) are considered to support and complement the main locations.

Site	Location and Lighting Type
Council House	<i>27 St Georges Terrace, Perth – Animations, scrolling text, country flags and logos</i>
Trafalgar Bridge	<i>Walkway over Claisebrook Cove connecting Victoria Gardens and Mardalup Park – Strip lighting in various colours</i>
Adelaide Terrace Pedestrian Bridge	<i>1 Adelaide Terrace, Perth – Strip lighting in various colours</i>
Perth Town Hall	<i>Corner of Barrack and Hay Streets – Spot lighting</i>
Russell Square	<i>James Street, Northbridge – Gazebo lighting and border tree spot lighting</i>
Pier Street	<i>Between Murray & Hay Streets – String lighting</i>
Plain Street Pedestrian Tunnel	<i>Claisebrook, East Perth – Strip lighting</i>
Brooke Street Pedestrian Tunnel	<i>Claisebrook, East Perth – Strip lighting</i>
Barrack Street	<i>Between Wellington Street and St Georges Terrace – Mini strip lighting</i>
Forrest Chase	Façades lighting
Mounts Bay Road	Tree spot lighting
Wellington Square	Restrictions apply
Hay St Irwin (Law Courts)	Restrictions apply due to function lighting

This publication is available in alternative formats and language upon request.

For further details please contact:
Partnership & Activity Approvals Team



GPO Box C120,
Perth WA 6839



27 St Georges Terrace
Perth WA 6000



perth.wa.gov.au

T 08 9461 3333

E info@cityofperth.wa.gov.au

