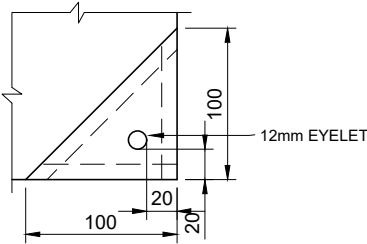
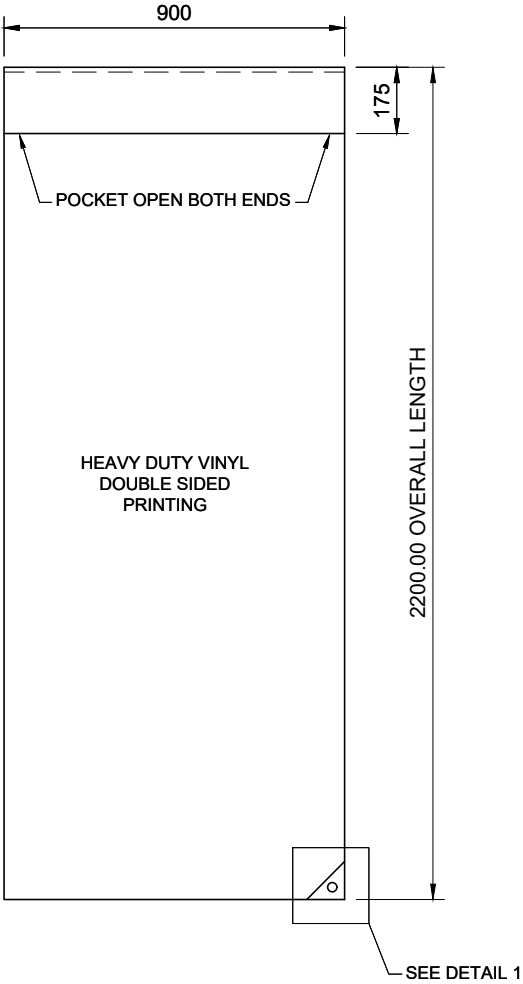


THESE BANNERS ARE USED IN THE FOLLOWING LOCATIONS:

- M1 - 32 BANNERS ON HAY ST MALL
- M2 - 16 BANNERS ON MURRAY ST MALL
- M4 - 12 BANNERS ON WILLIAM ST
- A1 - 4 BANNERS ON ABERDEEN ST



DETAIL 1
REINFORCED CORNER



FRONT VIEW

Notes:

1. Anchor bolt rope tape must be 10mm to fit banner attachment.
2. For General Notes refer *Design and Construction Note 900.02*.