

LARGE FABRIC BANNER - TYPE 1

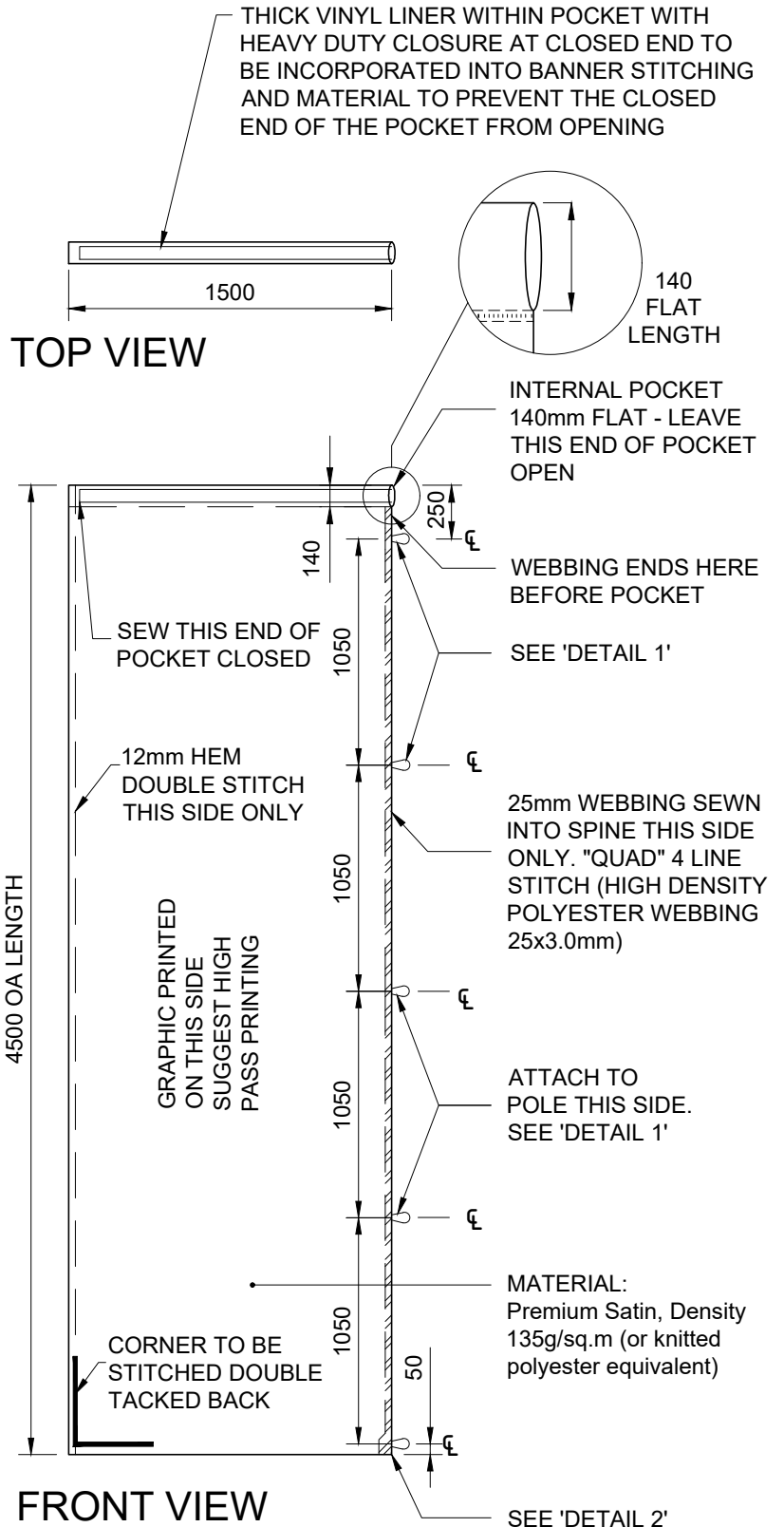
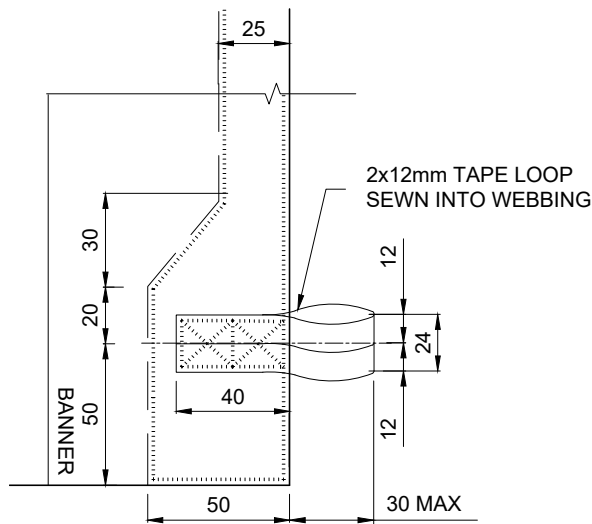
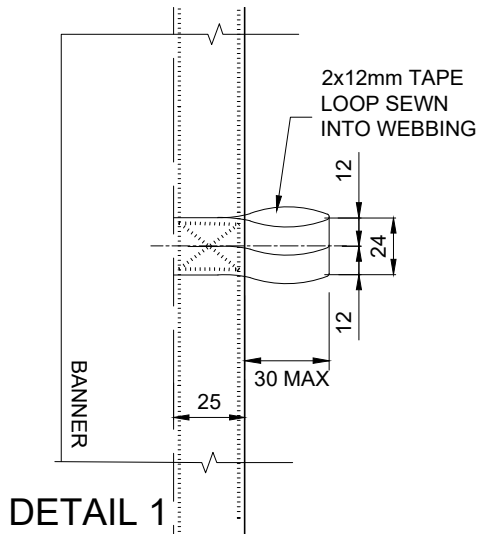
901.01

BANNERS & FLAGS

REVIEWED: 08.03.2024

THESE BANNERS ARE USED IN THE FOLLOWING LOCATIONS:

T1 - 26 BANNERS ON ST GEORGES TCE
 T2 - 16 BANNERS ON ST GEORGES TCE
 T3 - 28 BANNERS ON ST GEORGES TCE
 T4 - 38 BANNERS ON ADELAIDE TCE
 T5 - 16 BANNERS ON ADELAIDE TCE
 T7 - 10 BANNERS ON ADELAIDE TCE
 M3 - 12 BANNERS IN FORREST PLACE
 W1 - 10 BANNERS ON WELLINGTON ST
 W2 - 22 BANNERS ON WELLINGTON ST
 R2.5 - 8 BANNERS ON ROE ST



Notes:

1. Tape loops must be attached to resist tensile loads of 50kg ea.
2. Webbing material to be high density polyester webbing 25x3.0mm
3. All dimensions to tape loops are to the centre of tape loop attachment.
4. For General Notes refer *Design and Construction Note 900.01*.