

City of Perth

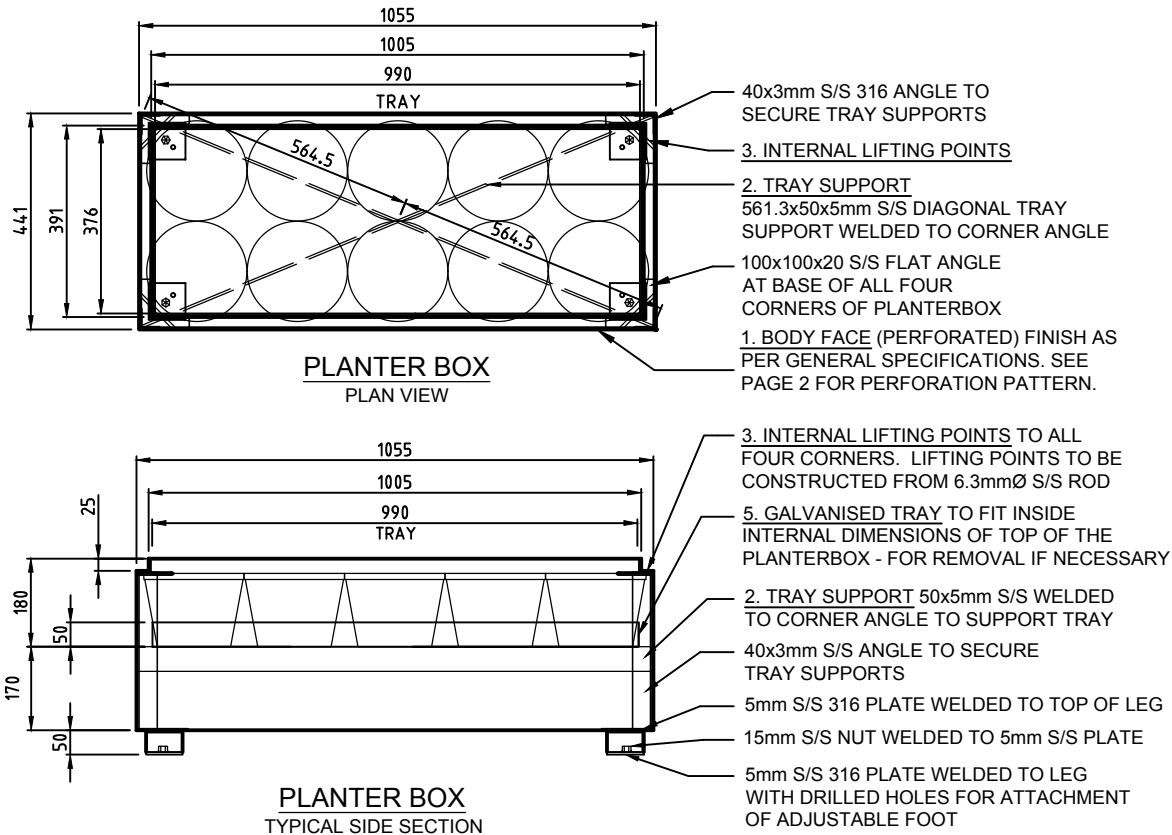
Design and Construction Note

506.01

Planter Boxes

Stainless Steel Rectangular Planter

Reviewed: 30/04/2019



GENERAL SPECIFICATIONS

1. BODY FACE

2.5mm STAINLESS STEEL.
GRADE: 316 / 2B FINISH.
PRIME SURFACE BY SAND BLASTING AND FINISH SURFACE WITH 20.40 GARNET ELECTRO-POLISH.

2. TRAY SUPPORT

50x5mm STAINLESS STEEL. GRADE: 316
FINISH: SAND BLASTED
4x LENGTHS OF 564.5mm

3. INTERNAL LIFTING POINTS

LIFTING POINTS 6.3mm STAINLESS STEEL RODS.
GRADE: 316. 20.40 GARNET ELECTRO-POLISHED FINISH

4. FEET PLATES

75x75x5mm STAINLESS STEEL. GRADE: 316
20.40 GARNET ELECTRO-POLISHED FINISH
13mm THREADED STAINLESS STEEL NUT
12mm THREADED STAINLESS STEEL GLIDE
8mm HOLE FOR DYNABOLT

5. GALVANISED TRAY

0.9mm GALVANISED COAT STEEL GRADE: C250

