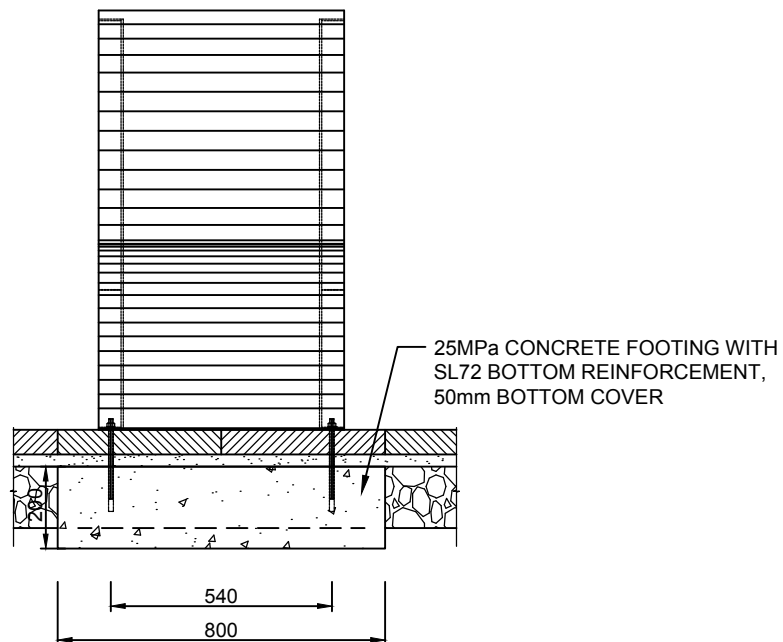


ELEVATION



END ELEVATION

- Seats should be located to ensure that the fixing down bolts are 50mm minimum from joints in the paving.
Seats should be positioned either parallel or at right angles to the street axis. In addition, seats should be located:
- * where they are needed;
 - * where they do not become obstructive;
 - * in the shade;
 - * to create a sense of safety;
 - * to provide a view towards activities; and
 - * a minimum of 600mm from the road.