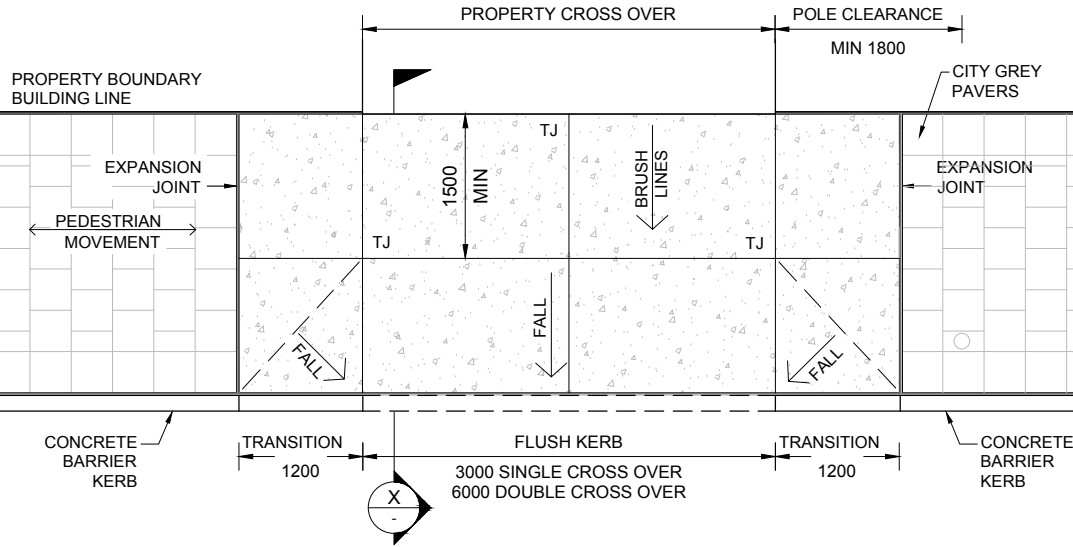
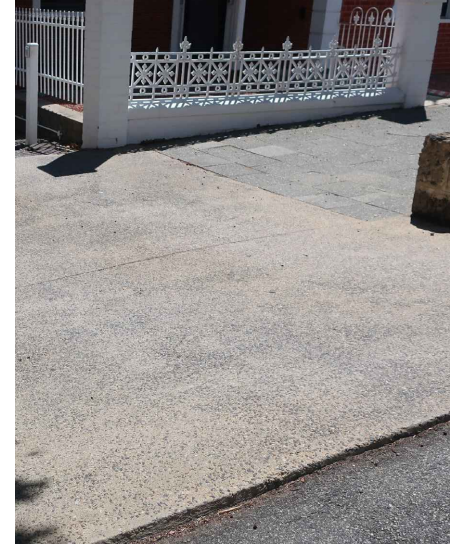


CONCRETE VEHICLE CROSS-OVER

302.04

FOOTPATH AND PAVEMENT DESIGN

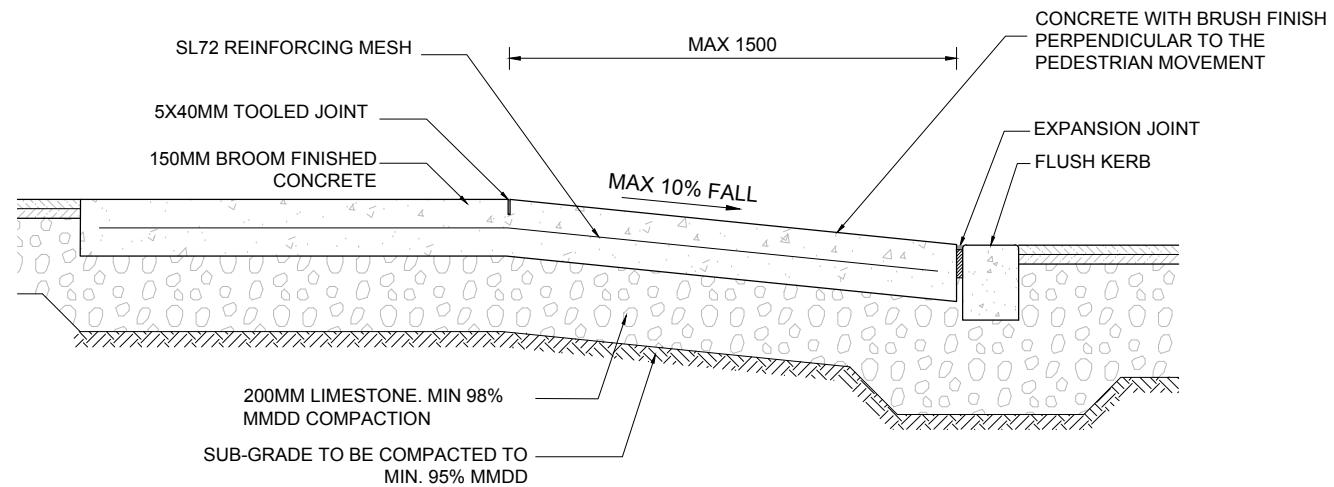
REVIEWED: 07.05.2024



PLAN

GENERAL NOTES:

1. CONCRETE CROSSOVER IS ONLY FOR USE IN RESIDENTIAL AREAS IN CRAWLEY & UWA. USE IN THE CITY FOR SITE CONSTRUCTION PURPOSES IS TEMPORARY ONLY.
2. ALL EXPANSION JOINTS SHALL BE 75MM X 10MM 'ABELFLEX' BUTYL MASTIC SEALANT TO BE USED ON EXPANSION JOINTS. CITY SHOULD SPECIFY A COLOUR MATCH, OR SIMILAR APPROVED WITH 'PAVELOCK' SAND OR SIMILAR APPROVED.
3. 150MM CONCRETE TO ACHIEVE A MINIMUM CHARACTERISTIC COMPRESSIVE STRENGTH OF 32MPa AT 28 DAYS. A MINIMUM NOMINAL AGGREGATE OF 14MM AND SLUMP OF 80MM MAX. SLIP RESISTANCE TO COMPLY WITH AS4586 & AS3661.



SECTION